



衍惠电子

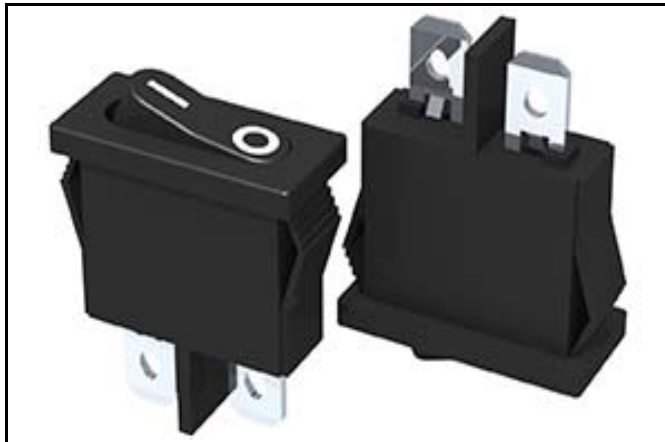
AC SWITCH



YH3-1B-AB01-011-1

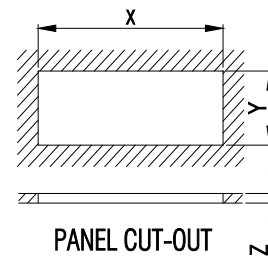
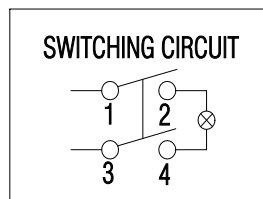
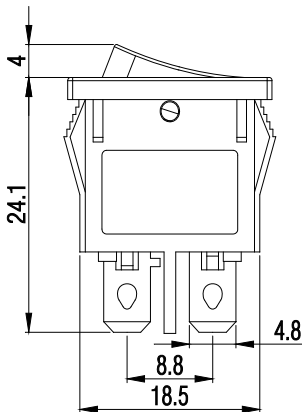
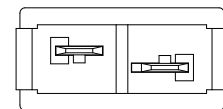
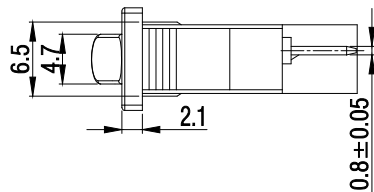
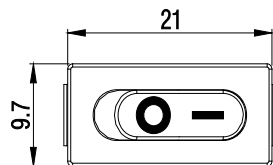
6(2)A/250Vac & 10A/125Vac

SPECIFICATION



- | | |
|----------------------------------|---------------|
| 1. Dielectric withstand strength | AC 1500V/1min |
| 2. Insulation resistance | ≥ 100MΩ |
| 3. Operation force | 550 ± 250gf |
| 4. Contact Resistance: | ≤ 50mΩ |
| 5. Life test | 10,000 cycle |

DRAWING



PANEL CUT-OUT		
Z	Y	X
0.7~1.25	6.5~6.7	18.9~19.1
1.25~2	6.5~6.7	19.1~19.2
2~3	6.5~6.7	19.3~19.4

YH3	本体	本体颜色	按钮类型	按钮颜色	按钮印字	电路图	极	端子规格	备注
	1	B 黑色 Black	A	B 黑色 Black	00	01 ON-OFF	1 单极 Single Pole	1 4.8mm TAB 0.8mm THICK	
	2	G 绿色 Green	B	G 绿色 Green	01			2 PCB (RIGHTANGLE)	
	3	A 灰色 Gray	C	A 灰色 Gray	02	08			
	4	Y 黄色 Yellow		Y 黄色 Yellow	03	09			
	5	R 红色 Red		R 红色 Red	05	10			
		W 白色 White		W 白色 White	06	13			
		L 蓝色 Blue		L 蓝色 Blue	07	14			
		O 橘黄色 Orange		O 橘黄色 Orange					
		P 紫色 Purple		P 紫色 Purple					